

LEGEND

Product Range



A PART OF



About Merlin Chemicals

Merlin Chemicals have been manufacturing the Legend range of quality cleaning chemicals for over 30 years. Merlin has a global reach, our distributors are located throughout the UK, Europe, Middle East, and Africa. Now, as part of the Kersia Group we can also draw on the knowledge and experience of our partner companies worldwide.

We are a trusted partner to a number of key industries including catering, contract cleaning, facilities management, hotel and leisure, food processing, laundry, brewing, the care sector, local authorities, and transport. Merlin Chemicals is a responsible manufacturer, we are aware of our responsibilities to our customers, the environment, and wider society.

Our extensive range of concentrated products can help dramatically reduce your carbon footprint by reducing the number of road journeys required to transport cleaning chemicals. A further benefit is that local storage area and costs are reduced. We encourage the use of refillable trigger-spray bottles in place of single-use plastic, so less material to landfill and further cost-savings.

We insist that materials we source for our products are fully biodegradable, and that our packaging can be recycled or re-used. We are ISO:9001 and ISO:14001 accredited. Our transport fleet is FORS accredited (Fleet Operator Recognition Scheme) and we are members of the FTA (Freight Transport Association). We keep abreast of and comply with all UK and European environmental legislation.

You may have used our products without realising, that is because Merlin Chemicals has extensive experience of providing own label products to a variety of sectors. We can help you grow your business with quality products that carry your branding, and can help with label design whilst ensuring you remain legally compliant in a heavily regulated and scrutinised industry.



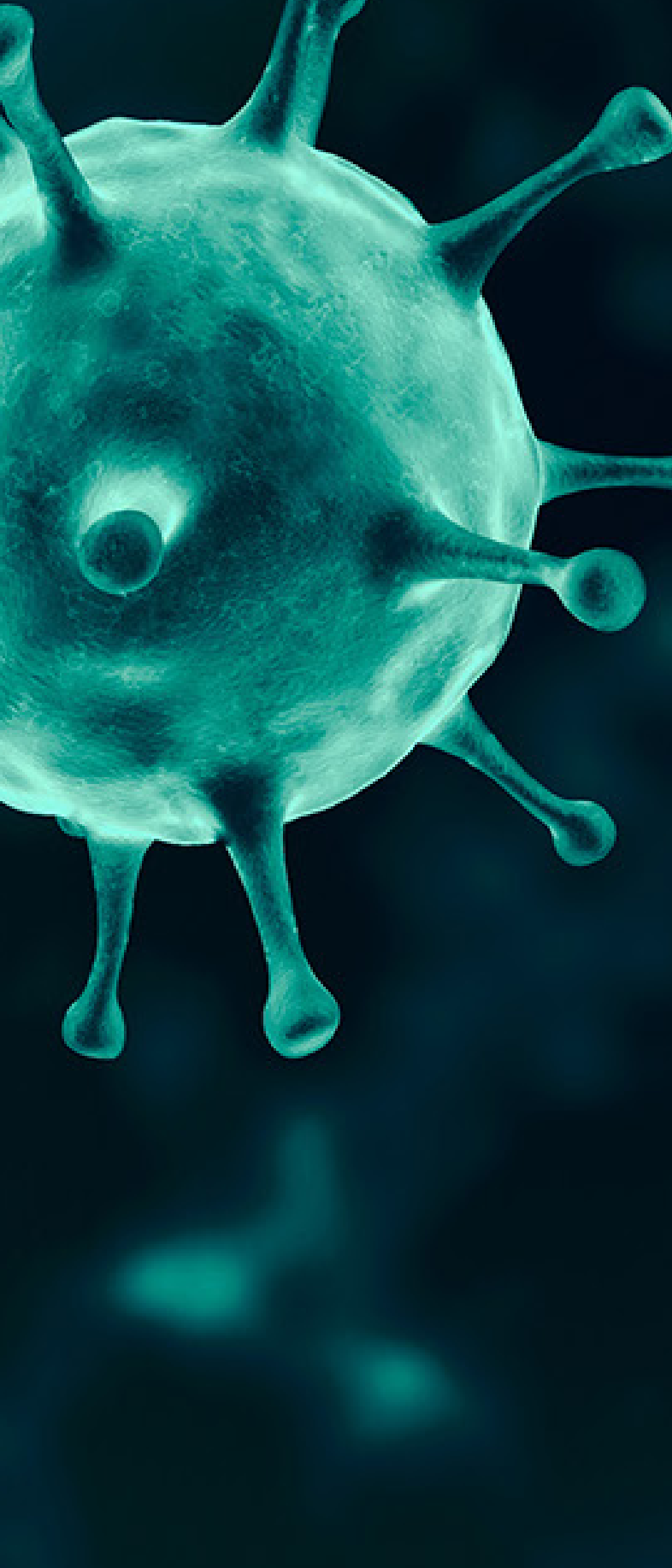
Contents

Page 1	Antiviral and Bactericidal Products
Page 4	Legend Catering
Page 8	Legend Floorcare
Page 11	Legend Hand & Body
Page 14	Legend Hard Surface & Speciality
Page 18	Legend Housekeeping
Page 22	Legend Washroom
Page 26	Legend Super Concentrates
Page 27	Holistic Green
Page 29	Legend Graffiti
Page 32	Legend Transport
Page 35	Hand Care Dispensers
Page 37	Logistic detail

How To Order

Phone: 01428 751 122
Email: merlinsales@kersia-group.com
Web: www.merlinchemicals.com





Fully tested Anti-Viral and Bactericidal Products

During the COVID-19 pandemic, the Kersia Group has been developing and testing new and existing products to help our customers meet the challenges the virus has brought to everyday lives.

These products can be used for cleaning and disinfection of touch points to help us all to keep safe and reduce the risk of infection whilst carrying out our daily activities

Coronavirus disease 2019 (COVID-19) is a respiratory infection caused by SARS-CoV-2 (COVID-19 virus). SARS-CoV-2 is an enveloped virus with a fragile outer lipid envelope that makes it more susceptible to disinfectants compared to non-enveloped viruses.

EN14476 certification relates to a cleaning products virucidal activity against enveloped viruses: (e.g. coronaviruses (including SARS-CoV-2 and MERS-CoV)

It is very important to always follow manufacturer's instructions so that disinfectants are prepared, handled and stored safely. Wear appropriate personal protective equipment (PPE) to avoid chemical

**NEVER DRINK OR WASH WITH A CLEANING CHEMICAL
SERIOUS INJURY OR EVEN DEATH CAN RESULT**



LEGEND

Antiviral and Bactericidal Products



THESE PRODUCTS ARE INDEPENDENTLY TESTED TO EN14476 EFFECTIVE AGAINST ENVELOPED VIRUSES SUCH AS CORONAVIRUSES

	EN14476 Enveloped viruses disinfection	EN13697 Bactericidal + Fungal disinfection	EN1276 Bactericidal disinfection	EN1500 Hand disinfection	EN1650 Bactericidal + Fungal disinfection	Suitable for use in food preparation areas
LEGEND ANTI-VIRAL WIPES	●	●	●		●	●
HAND & SURFACE VIRUCIDAL WIPES	●		●	●		●
VIRUCIDAL DISINFECTANT	●	●	●		●	●
AERO-SAN	●	●				
STERLISING FLUID	●	●	●			
MICROCLENZ GEL	●		●	●		●
HANDSAN	●		●	●		●
RAPID SHIELD RTU	●	●	●			●



COV-Hygien Xpress On-Site Detection Kit for SARS CoV-2 Virus (5 x Tests)

Code: TEST0216

Merlin also has an easy to use test kit which can detect SARS CoV2 which causes COVID-19.

This test is an environmental surface test which can be used to demonstrate effective decontamination of surfaces if an establishment has had a case of COVID-19. This will ensure your customers and staff are visiting / working in a safe environment.



LEGEND ANTI-VIRAL WIPES (HLL/1000)

Suitable for public areas such as receptions and waiting rooms, but also Food, Beverage and Pharmaceutical production environments, where high levels of disinfection are required. Used as part of a hygiene program Legend Anti-Viral Wipes are an effective aid to the control of Coronavirus.



HAND AND SURFACE VIRUCIDAL WIPES (HLV7/BOX) 6x200 wipes

Hand and surface Virucidal Wipes are impregnated sanitising wipes. They are gentle enough to be used on the hands but powerful enough to treat all hard surfaces for cleaning and disinfection.



VIRUCIDAL DISINFECTANT RTU (LEGM-AN0011-SSW) 6x1 ltr

Sprayable hard surface disinfectant that is effective against viruses, bacteria, mould and fungi. Ideal for use in public areas, hotels, schools, carehomes, food production areas and anywhere high levels of disinfection are required. Can also be used with fogging machines.



AERO-SAN (HLA10/BOX) 12x400 ml

Alcohol based aerosol spray sanitiser that is ideal for office equipment such as keyboards and laptops. Use on the go to sanitise mobile phone screens, shopping trolleys, steering wheels, hand rails, door knobs and other touch points.



STERILISING FLUID (LEGM-AS0140-2N) 2x5 ltr

Legend Sterilising Fluid easily and effectively disinfects hard surfaces, offering protection against bacteria, yeast, fungi and viruses. Suitable for use on hard surfaces floors, walls and utensils.



MICROCLENZ GEL Alcohol Hand Sanitiser (LEGM-AM0621-PMP) 12x500 ml

Premium alcohol hand sanitiser, with alcohol content in excess of 70%. Contains no Methanol (which is toxic to humans and can be absorbed through the skin) that may be found in inferior products.



RAPID SHIELD RTU (LEGM-1204-SSW) 6x1 ltr

An effective aid to the control of viruses and bacteria lingering on hard surfaces. Essential for any food preparation surface, Rapid Shield is a non-tainting yet powerful virus and bacteria control tool.

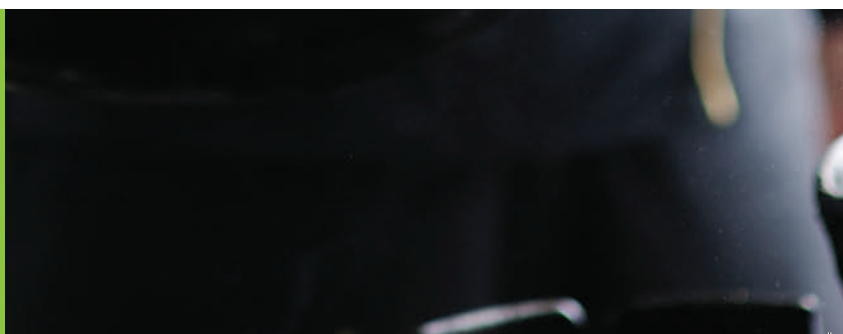


HANDSAN Alcohol-free Hand Sanitiser (HLH9/BOX) 4x5 ltr

Handsan is non-perfumed and alcohol-free. It allows users an alternative way to sanitise their hands where the use of alcohol products are not desired.



LEGEND Catering





BD2000 CONCENTRATE
Bactericidal Kitchen Cleaner

- Concentrated surface sanitiser
- Tested to EN1276, EN13697 & EN1650
- QAC based Formulation

2x5Ltr **code:** LEGM-2213-2NEX



BD2000 RTU
Bactericidal Kitchen Cleaner

- Ready to use surface sanitiser
- Tested to EN1276, EN13697 & EN1650
- QAC based Formulation

6x1Ltr **code:** LEGM-2171-SSW



PROTECT
Food Safe Sanitiser

- Ready to use surface sanitiser
- Tested to EN1276, EN13697
- QAC Free Formulation

4x5Ltr **code:** LEGM-AP0480-4N



PROTECT
Food Safe Sanitiser

- Ready to use surface sanitiser
- Tested to EN1276, EN13697
- QAC Free Formulation

6x1Ltr **code:** LEGM-AP0481-SSW



KITCHEN CLEANER RTU
Kitchen Hard Surface Cleaner

- Ready to use kitchen cleaner
- Effectively removes oil, grease & food debris
- Suitable for use on most surfaces

6x1Ltr **code:** LEGM-KC200-SSW



CRUISER
Heavy Duty Degreaser

- Concentrated formulation
- Excellent degreasing properties
- Not suitable for soft metals, e.g. aluminium

2x5Ltr **code:** LEGM-AC0060-2NEX



HD OVEN CLEANER
Heavy Duty Carbon Remover

- Ready to use formulation
- Highly effective oven/grill degreaser
- Not suitable for soft metals, e.g. aluminium
- Spray lance available:
code: OPT1

2x5Ltr **code:** LEGM-AO0120-2NEX



HD OVEN CLEANER
Heavy Duty Carbon Remover

- Ready to use formulation
- Highly effective oven/grill degreaser
- Not suitable for soft metals, e.g. aluminium

6x1Ltr **code:** LEGM-AO0124-SSN



SPECTRUM 20
Premium Washing Up Liquid

- Premium extra-concentrated formulation
- Excellent foaming properties
- Neutral detergent

4x5Ltr **code:** LEGM-AS0060-4N



SPECTRUM 11
Premium Washing Up Liquid

- Premium concentrated formulation
- Excellent foaming properties
- Neutral detergent

4x5Ltr **code:** LEGM-AS0001-4N



BD500
Hygienic Washing Up Liquid

- Hygienic formulation
- Good foaming properties
- For manual washing up

4x5Ltr **code:** LEGM-AB0020-4N



MACHINE DISHWASH DETERGENT
Suitable for Hard & Soft Water

- Concentrated dishwash detergent
- Designed for auto dose
- Suitable for use in all water conditions

2x5Ltr **code:** LEGM-AE0001-2NEX



MACHINE DISHWASH DETERGENT
Suitable for Hard & Soft Water

- Concentrated dishwash detergent
- Designed for auto dose
- Suitable for use in all water conditions

20Ltr **code:** LEGM-AE0003



CHLORINATED DISHWASH DETERGENT
Destaining Dishwash Detergent

- Low-foaming formulation
- Designed for auto dose
- Chlorinated to provide additional destaining properties

2x5Ltr **code:** LEGM-AB0040-2NEX



MACHINE RINSE AID
Concentrated Rinse Aid

- Low-foaming formulation
- Designed for auto dose
- Suitable for use in all water conditions

2x5Ltr **code:** LEGM-AM0440-2N



MACHINE RINSE AID
Concentrated Rinse Aid

- Low-foaming formulation
- Designed for auto dose
- Suitable for use in all water conditions

20Ltr **code:** LEGM-AM0442



GENIE
Machine Dishwash Powder

- Hand feed dishwash powder
- For use in domestic & commercial dishwash machines
- Fully built powder to provide first class results

10kg **code:** LEGM-AG0041



DIVINE
Tea & Coffee Stain Remover

- Oxygen releasing powder
- Designed to remove tea & coffee stains
- Safe on stainless steel, plastics & china

10kg **code:** LEGM-AD0101



DEGREASER POWDER

Kitchen Degreasing Powder

- Heavy duty powder degreaser
- Non-Caustic formulation
- Suitable for fat fryers, soak tank & decarbonisers

10kg **code:** LEGM-AP0101



DIGESTER

Enzyme Based Drain Maintainer

- Enzymatic digester liquid
- Suitable for auto-dosing
- Designed to reduce grease & fats in drainage pipework

4x5Ltr **code:** LEGM-AD0060-4N



DIGESTER

Enzyme Based Drain Maintainer

- Enzymatic digester liquid
- Suitable for auto-dosing
- Designed to reduce grease & fats in drainage pipework

20Ltr **code:** LEGM-AD0062



PYRAMID PLUS

Heavy Duty Phosphoric Acid Descaler

- Limescale & Rust remover
- Also suitable for cleaning of aluminium
- Dilute as required

2x5Ltr **code:** LEGM-AP0080-2N



STAINLESS STEEL POLISH

Kitchen Steel Surface Polish

- Fast acting, effective formulation
- Ready to use formulation
- Outstanding smear free finish

6x1Ltr **code:** LEGM-AS0323-SSW



MACHINE GLASSWASH DETERGENT

Commercial Glasswasher Detergent

- Concentrated Glasswash rinse aid.
- Designed for auto-dose units.
- Suitable for use in all water conditions

2x5Ltr **code:** LEGM-AG0020-2NEX



MACHINE GLASSWASH RINSE AID

Commercial Glasswasher Rinse Aid

- Glasswash rinse aid for auto-dose
- Concentrated glasswash rinse aid designed for auto dose
- Suitable for use in all water conditions

4x5Ltr **code:** LEGM-FZ0022-4N



BEERLINE CLEANER

Beerline, Pipe & Pump Cleaner

- Concentrated formulation
- Removes yeast, sugars & proteins
- Non-tainting

2x5Ltr **code:** LEGM-AB0040-20EX



BEERLINE CLEANER PURPLE

Indicated Beerline Cleaner

- Concentrated formulation
- Removes yeasts, sugars & proteins
- Non-tainting with colour dye indicator

2x5Ltr **code:** LEGM-AB0640-2NEX



GLASS RENOVATOR

Glassware Rejuvenator

- Promotes beer head retention
- Concentrated formulation
- Helps reduce wear and tear on glasses
- Removes build up of rinse aid and detergent residues

5kg **code:** LEGM-AG0080



LEGEND Floorcare





MAESTRO 25
High Solids Metallised Floor Polish

- Ready to Use formulation
- Suitable for use on most hard floor surfaces
- Slip tested by 4Rail. Assessment No: R117651

4x5Ltr **code:** LEGM-AD0140-4N



BUFFER
Buffable Floor Maintainer

- Concentrated floor maintainer
- Produces a non-slip gloss when burnished
- Suitable for most hard floor surfaces

4x5Ltr **code:** LEGM-AB0260-4N



SPEEDY
Speed Stripper

- Concentrated polish stripper
- Removes polish build up
- Contains no harsh solvents or ammonia

4x5Ltr **code:** LEGM-AS0180-4NEX



LEMON GEL
Neutral Gel Floor Cleaner

- Concentrated formulation
- Neutral floor cleaner with a citrus fragrance
- Leaves a satin finish

4x5Ltr **code:** LEGM-AC0505-4N



NEUTRAL FLOOR CLEANER
Neutral Floor Cleaner

- Concentrated formulation
- Suitable for use on most hard floor surfaces
- Low foam

2x5Ltr **code:** LEGM-AJ0020-2N



FLOODET
Machine Floor Detergent

- Concentrated formulation
- Caustic free product
- Low foam

4x5Ltr **code:** LEGM-AF0040-4NEX



SAFETY FLOOR CLEANER
For Cleaning Anti-Slip Flooring

- Concentrated Formulation
- Suitable for all types of anti-slip flooring
- Low Foam

4x5Ltr **code:** LEGM-AS0530-4N



QUARRY CLEAN
Natural Stone Cleaner

- Concentrated Formulation
- Ideal for cleaning stone floors
- Leaves a new look finish

4x5Ltr **code:** LEGM-AQ0020-4N



DEEPFRESH
Heavy Duty Floor Cleaner

- Concentrated formulation
- Designed for deep cleaning
- 4Rail Assessment No: R16545

4x5Ltr **code:** LEGM-AD0120-4N



EXTRACT
Carpet Shampoo

- Concentrated formulation
- Low foaming carpet shampoo
- For use with extraction machines

4x5Ltr **code:** LEGM-AE0140-4N



CARPET SPOT & STAIN REMOVER
Spot & Stain Liquid

- Ready to Use formulation
- Removes stains from carpets & upholstery
- Leaves a fresh citrus fragrance

6x1Ltr **code:** LEGM-AE0290-SSW



GUM REMOVER PLUS
Gum & label Remover

- Ready to Use formulation
- Removes gum from hard floors & carpets
- 4Rail Assessment No: R287301

12x1Ltr **code:** LEGM-AC0661-SDW



LEGEND Hand & Body





MAJESTIC (with pump)
Pink Pearlescent Hand Soap

- Ready to Use formulation
- Soft & gentle lotion handsoap
- Dermatologically tested

6x1Ltr **code:** LEGM-AM0161-PMP



MAJESTIC (Capped)
Pink Pearlescent Hand Soap

- Ready to Use formulation
- Soft & gentle lotion handsoap
- Dermatologically tested

6x1Ltr **code:** LEGM-AM0161-CAP



MAJESTIC
Pink Pearlescent Hand Soap

- Ready to Use formulation
- Soft & gentle lotion handsoap
- Dermatologically tested

4x5Ltr **code:** LEGM-AM0160-4N



PURELITE PLUS (capped)
Antibacterial Liquid Hand Soap

- Ready to Use formulation
- Passes EN1499
- Non perfumed anti-bac handsoap

6x1Ltr **code:** LEGM-AP0041-CAP



PURELITE PLUS (with Pump)
Antibacterial Liquid Hand Soap

- Ready to Use formulation
- Passes EN1499
- Non perfumed anti bac hand soap

6x1Ltr **code:** LEGM-2401-PMP



PURELITE PLUS
Antibacterial Liquid Hand Soap

- Ready to Use formulation
- Passes EN1499
- Non perfumed anti bac hand soap

4x5Ltr **code:** LEGM-AP0040-4N



MICROCLENZ (flip cap)
Alcohol Based Liquid Hand Sanitiser

- Ready to Use formulation
- Conforms to EN1276, EN1500 and EN14476 for enveloped viruses.
- Contains emollients to prevent skin dryness

12x500ml **code:** LEGM-6002-FLIP



MICROCLENZ GEL (with pump)
Alcohol Based Gel Hand Sanitiser

- Ready to Use formulation
- Conforms to EN1276, EN1500 and EN14476 for enveloped viruses.
- Contains emollients to prevent skin dryness

12x500ml **code:** LEGM-AM0621-PMP



MICROCLENZ GEL
Alcohol Based Gel Hand Sanitiser

- Ready to Use formulation
- Conforms to EN1276, EN1500 and EN14476 for enveloped viruses.
- Contains emollients to prevent skin dryness

4x5Ltr **code:** LEGM-AM0620-4N



HAIR & BODY WASH
Apple Fragrance

- Ready to Use formulation
- Contains emollients for excellent conditioning properties
- Kind to skin

4x5Ltr **code:** LEGM-AH0120-4N



HAIR & BODY WASH
Tea Tree Fragrance

- Ready to Use formulation
- Contains emollients for excellent conditioning properties
- Kind to skin

4x5Ltr **code:** LEGM-AH0460-4N



HAIR & BODY WASH
Coconut Fragrance

- Ready to Use formulation
- Contains emollients for excellent conditioning properties
- Kind to skin

4x5Ltr **code:** LEGM-AH0100-4N



HAIR & BODY WASH
Lemon Fragrance

- Ready to Use formulation
- Contains emollients for excellent conditioning properties
- Kind to skin

4x5Ltr **code:** LEGM-AM0190-4N





LEGEND

Hard Surface & Speciality

**OCTET**

Bactericidal All Purpose Cleaner

- Concentrated Formulation
- Antibacterial Cleaner
- Effective against MRSA on hard surfaces

4x5Ltr **code:** LEGM-AO0001-4N**OCTET**

Bactericidal All Purpose Cleaner

- Ready to Use Formulation
- Antibacterial Cleaner
- Effective against MRSA on hard surfaces

6x1Ltr **code:** LEGM-AO0006-SSW**MIGHTY**

Multi-Purpose Cleaner

- Concentrated Formulation
- Suitable for use on all hard surfaces
- Excellent degreasing properties

4x5Ltr **code:** LEGM-AM0020-4NEX**ORANGE**

Multi-Purpose Cleaner

- Concentrated Formulation
- Leave a residual orange fragrance
- Excellent degreasing properties

4x5Ltr **code:** LEGM-AD0280-4N**BC4000 BUBBLEGUM**

Disinfecting Odour Control Concentrate

- Concentrated Formulation
- Leaves a residual bubblegum fragrance
- Effective against bacteria

2x5Ltr **code:** LEGM-1094-2N**BC40 CHERRY**

Odour Control Concentrate

- Concentrated Formulation
- Odour control concentrated cleaner
- Leaves a long lasting pleasant fragrance

4x5Ltr **code:** LEGM-AB0060-4N**BC40 BUBBLEGUM**

Odour Control Concentrate

- Concentrated Formulation
- Odour control concentrated cleaner
- Leaves a long lasting pleasant fragrance

4x5Ltr **code:** LEGM-AB0080-4N**BC40 POT POURRI**

Odour Control Concentrate

- Concentrated Formulation
- Odour control concentrated cleaner
- Leaves a long lasting pleasant fragrance

4x5Ltr **code:** LEGM-AB0200-4N**BC40 PEARDROP**

Odour Control Concentrate

- Concentrated Formulation
- Odour control concentrated cleaner
- Leaves a long lasting pleasant fragrance

4x5Ltr **code:** LEGM-AB0280-4N**BC40 LAVENDER**

Odour Control Concentrate

- Concentrated Formulation
- Odour control concentrated cleaner
- Leaves a long lasting pleasant fragrance

4x5Ltr **code:** LEGM-AB0820-4N



BC40 LEMON
Odour Control Concentrate

- Concentrated Formulation
- Odour control concentrated cleaner
- Leaves a long lasting pleasant fragrance

4x5Ltr **code:** LEGM-AB0220-4N



BC40 TROPICAL LIME
Odour Control Concentrate

- Concentrated Formulation
- Odour control concentrated cleaner
- Leaves a long lasting pleasant fragrance

4x5Ltr **code:** LEGM-AB0980-4N



BC40 FRESH MINT
Odour Control Concentrate

- Concentrated Formulation
- Odour control concentrated cleaner
- Leaves a long lasting pleasant fragrance

4x5Ltr **code:** LEGM-AB0860-4N



HARD 'N' FAST
High performance Hard Surface Cleaner

- Concentrated Formulation
- For all washable hard surfaces
- 4Rail approved product

4x5Ltr **code:** LEGM-AH0300-4N



SPRAY & WIPE WITH BLEACH
Mould & Mildew Remover

- Ready to Use Formulation
- Cuts through grime and grease
- Removes mould and mildew

2x5Ltr **code:** LEGM-AJ0303-2WEX



SPRAY & WIPE WITH BLEACH
Mould & Mildew Remover

- Ready to Use Formulation
- Cuts through grime and grease
- Removes mould and mildew

6x1Ltr **code:** LEGM-AJ0302-SSW



VIRUCIDAL DISINFECTANT RTU

Conforms to EN1276, EN13697, EN14476, EN1650, EN1656, EN1657

- Ready to Use Formulation
- Effective against bacteria and viruses
- 4Rail Assessment No: R674551

6x1Ltr **code:** LEGM-AN0011-SSW



VIRUCIDAL DISINFECTANT RTU

Conforms to EN1276, EN13697, EN14476, EN1650, EN1656, EN1657

- Ready to Use Formulation
- Effective against bacteria and viruses
- 4Rail Assessment No: R674551

2x5Ltr **code:** LEGM-AN0011-2N



VIRUCIDAL DISINFECTANT

Conforms to EN1276, EN13697, EN14476, EN1650, EN1656, EN1657

- Concentrated Formulation
- Effective against bacteria and viruses
- Dilute prior to use

4x5Ltr **code:** LEGM-AN0010-4N



ICE MELTS RS

Ice Removing Compound

- Organic granules
- Easy-to-spread de-icer
- TFL Approved

10kg **code:** LEGM-AI0061



MATRIX

Heavy Duty Descaler

- Concentrated Formulation
- Fast-acting limescale remover
- Used for floor etching & lime-scale removal

2x5Ltr **code:** LEGM-AM0080-2NEX



STERILISING FLUID

Conforms to EN1276, EN13697, EN14476

- Concentrated Formulation
- Bleach based disinfectant
- Effective against Bacteria and Viruses

2x5Ltr **code:** LEGM-AS0140-2N





LEGEND Housekeeping





SPRAY & WIPE RTU
Multi-Purpose Cleaner

- Ready to Use Formulation
- Multi Purpose Cleaner
- Leaves a fresh fragrance

6x1Ltr **code:** LEGM-AJ0300-SSW



COSMIC
Glass & Mirror Cleaner

- Ready to Use Formulation
- Leaves a streak free shine
- Suitable for use on all glass and mirrored surfaces

6x1Ltr **code:** LEGM-AC0009-SSW



JADE
Air Freshener

- Ready to Use Formulation
- Pleasant Pot Pourri Fragrance
- Long lasting fragrance

6x1Ltr **code:** LEGM-AJ0004-SSW



ELITE
Furniture Polish

- Ready to Use Formulation
- Suitable for most hard surfaces
- Contains a wax emulsion

6x1Ltr **code:** LEGM-AE0105-SSW



KETTLE DESCALER
Kitchen Appliance Descaler

- Concentrated Formulation
- Excellent descaling properties
- Based on Phosphoric Acid

6x1Ltr **code:** LEGM-FZ3033-SDN



SHOWER HEAD CLEANER & DESCALER
Acidic Based Shower Head Descaler

- Concentrated Formulation
- Effective against limescale
- Leaves shower heads sparkling

4x5Ltr **code:** LEGM-ADM0090-4N



ENZYME MULTIPURPOSE CLEANER
Biological Multipurpose Cleaner

- Eliminates damp and musty smells
- Effective urine odour remover
- Fully biodegradable

6x1Ltr **code:** LEGM-AE0321-SSW



LIQUID LAUNDRY DETERGENT
Biological Laundry Liquid

- High Performance Detergent
- Excellent Stain Removal
- Suitable for commercial and domestic machines

4x5Ltr **code:** LEGM-AL0020-4N



LIQUID LAUNDRY DETERGENT
Biological Laundry Liquid

- High Performance Detergent
- Excellent stain removal
- Suitable for commercial and domestic machines

10Ltr **code:** LEGM-AL0021



LIQUID LAUNDRY DETERGENT
Biological Laundry Liquid

- High Performance Detergent
- Excellent stain removal
- Suitable for commercial and domestic machines

20Ltr **code:** LEGM-AL0022



LIQUID LAUNDRY PREMIUM DETERGENT
Non-Biological Laundry Liquid

- Continued brightness of colours
- Effective in hard and soft water conditions
- Effective in hot, warm and low temperature washes

4x5Ltr **code:** LEGM-AL0230-4N



LIQUID LAUNDRY PREMIUM DETERGENT
Non-Biological Laundry Liquid

- Continued brightness of colours
- Effective in hard and soft water conditions
- Effective in hot, warm and low temperatures washes

10Ltr **code:** LEGM-AL0231



LIQUID LAUNDRY PREMIUM DETERGENT
Non-Biological Laundry Liquid

- Continued brightness of colours
- Effective in hard and soft water conditions
- Effective in hot, warm and low temperature washes

20Ltr **code:** LEGM-AL0232



FABRIC SOFTENER PREMIUM
Premium Fabric Conditioner

- Eliminates Static Cling
- Replenishes softness in fabrics
- Long lasting fragrance

4x5Ltr **code:** LEGM-AF0400-4N



FABRIC SOFTENER PREMIUM
Premium Fabric Conditioner

- Eliminates Static Cling
- Replenishes softness in fabrics
- Long lasting fragrance

10Ltr **code:** LEGM-AF0401



FABRIC SOFTENER
Fabric Conditioner with a Fresh Fragrance

- Eliminates Static Cling
- Replenishes softness in fabrics
- Pleasant fresh fragrance

4x5Ltr **code:** LEGM-AF0080-4N



FABRIC SOFTENER
Fabric Conditioner with a Fresh Fragrance

- Eliminates Static Cling
- Replenishes softness in fabrics
- Pleasant fresh fragrance

10Ltr **code:** LEGM-AF0081



EMULSIFIER
Laundry Emulsifier

- Effective at Low Temperatures
- High strength surfactant based
- Removes food stains, oil, fats and grease

10Ltr **code:** LEGM-AE0201



HYPOCHLORITE DESTAINER
Low Temperature Destainer

- Sodium hypochlorite based formula
- High Strength Destainer
- Removes bleachable stains including tea, coffee and wine

10Ltr **code:** LEGM-AB0164



PEROXIDE DESTAINER
High Temperature Destainer

- Safe to use on coloured washes
- For use in auto dosed systems
- Suitable for hot washes up to 100°C

10Ltr **code:** LEGM-AH0041



PEROXIDE DESTAINER
High Temperature Destainer

- Safe to use on coloured washes
- For use in auto dosed systems
- Suitable for hot washes up to 100°C

20Ltr **code:** LEGM-AH0042



LOW TEMPERATURE DESTAINER
Colour-safe Destainer

- Saves on machine heating costs
- Colour safe
- Specially formulated to work at 20°C

10Ltr **code:** LEGM-AI0010



LAUNDRY DESTAIN POWDER
Oxygen Release Powder

- Suitable as a pre-soak agent
- Colour safe
- Removes tea, coffee and wine stains

10kg **code:** LEGM-AD0101L



RADIANT BIO
Biological Laundry Powder

- Effective commercial powder
- Removes stains including blood, tea and coffee
- Suitable for hot, warm and low temperatures washes

10kg **code:** LEGM-AL0120



RADIANT NON BIO
Non Bio Laundry Powder

- Effective commercial powder
- Non Biological Formulation
- Suitable for hot, warm and low temperatures washes

10kg **code:** LEGM-AL0210



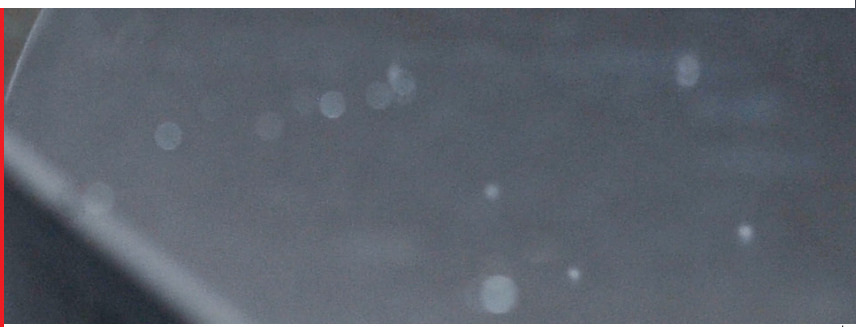
LAUNDRY SPOT AND STAIN REMOVER
Laundry Pre-Spot Treatment

- Colour Safe
- Safe on natural and man made fibres
- Removes food stains, oils, fats and grease

6x1Ltr **code:** LEGM-AE0293-SSW



LEGEND Washroom





APPLEFRESH
Daily Toilet Cleaner

- Neutral pH
- Daily use toilet cleaner
- Safe to use on enamelled surfaces and stainless steel

12x1Ltr **code:** LEGM-AA0090-ANG



LOOFRESH TUTTI FRUTTI
Daily Toilet Maintainer - Tutti Frutti Fragrance

- Daily use toilet acidic maintainer
- Effective against limescale
- Cling fast formulation

12x1Ltr **code:** LEGM-AL0251-ANG



LOOFRESH
Daily Toilet Maintainer - Pine Fragrance

- Daily use toilet acidic maintainer
- Effective against limescale
- Cling fast formulation

12x1Ltr **code:** LEGM-AL0065-ANG



PYRAMID
Toilet Cleaner & Washroom Descaler

- Concentrated acidic formulation
- Effective against limescale
- Safe to use on ceramic and stainless steel

12x1Ltr **code:** LEGM-AP0163-ANG



LOOCLEAN
Heavy Duty Toilet Cleaner & Descaler

- Contains hydrochloric acid
- Effective against limescale
- Not suitable for use on stainless steel

12x1Ltr **code:** LEGM-AL0042-ANG



OASIS
Washroom Cleaner - Herbal Fragrance

- Leaves a sparkling finish
- Concentrated alkaline detergent
- Removes grease, oil and fat deposits

4x5Ltr **code:** LEGM-AO0020-4N



OASIS RTU
Washroom Cleaner - Herbal Fragrance

- Leaves a sparkling finish
- Ready to use formulation
- Removes grease, oil and fat deposits

6x1Ltr **code:** LEGM-AO0025-SSW



OASIS FOAMER PEACH
Foaming Bathroom Cleaner - Peach Fragrance

- Leaves a pleasant residual fragrance
- Ready to use formulation
- Thick clinging foam action

6x1Ltr **code:** LEGM-AO0281-SSW



OASIS FOAMER PEACH

Foaming Bathroom Cleaner - Peach Fragrance

- Leaves a pleasant residual fragrance
- Concentrated formulation
- Thick clinging foam action

4x5Ltr **code:** LEGM-AO0280-4N



PINE DISINFECTANT

Disinfectant Pine Fragrance

- Leaves a pleasant pine fragrance
- Suitable for disinfecting drains, bins rubbish chutes etc.
- Effective against bacteria

4x5Ltr **code:** LEGM-AP0060-4N



CITRUS DISINFECTANT

Disinfectant Citrus Fragrance

- Leaves a pleasant citrus fragrance
- Suitable for disinfecting drains, bins, rubbish chutes etc.
- Effective against bacteria

4x5Ltr **code:** LEGM-AO0040-4N



PINE REFRESHER

Drain Odour Solution

- Agreeable pine fragrance
- Refreshes drains, bins, rubbish chutes
- Ideal where disinfection is not required

2x5Ltr **code:** LEGM-V11313-2WX5



LEGEND Super Concentrates

The Legend Super Concentrate range helps support your business to achieve increasingly strict environmental targets, whilst simultaneously driving down product and storage costs. Reduced storage space is better for COSHH. So, reduced costs, reduced carbon footprint, increased efficiency, increased safety!

Each 2 Litre Super Concentrate will provide enough doses for one hundred 500ml refills, and because they are reusable your plastic use is greatly reduced, **nearly 50 times less plastic!**

**Plastic weight of
Super Concentrate + Refill bottle = 125g**

**Plastic weight of
100 ready to use bottles = 5,700g**





WASH UP SUPER
Manual Washing Up Liquid

- Concentrated neutral detergent
- Ideal in catering and food establishments
- Designed to remove grease and fats

2x2Ltr **code:** LEGM-AL0260



SANITISER SUPER
Cleaner Sanitiser

- Bactericidal, perfume free and non-tainting
- Removes grease, oil and fat deposits
- Empty, labelled, 500ml trigger refills available

2x2Ltr **code:** LEGM-AL0265
12x500ml Refill **code:** LEG-REF#2-12x500



FLOOR CLEANER SUPER
Floor Cleaner and Degreaser

- Low Foam Properties
- Effective grease and grime remover
- Suitable for use in floor scrubber machines

2x2Ltr **code:** LEGM-AL0270



WASHROOM SUPER
Washroom Cleaner

- Leaves a pleasant residual fragrance
- For cleaning tiles, washbasins and shower cubicles
- Empty, labelled, 500ml trigger refills available

2x2Ltr **code:** LEGM-AL0275
12x500ml Refill **code:** LEG-REF#4-12x500



GLASS CLEANER SUPER
Glass & Mirror Cleaner

- Fast Acting Formulation
- Easy streak free cleaning
- Empty, labelled, 500ml trigger refills available

2x2Ltr **code:** LEGM-AL0280
12x500ml Refill **code:** LEG-REF#5-12-x500



ALL PURPOSE SUPER
Multi-Surface Cleaner

- High active multi-purpose cleaner
- For use on a variety of surfaces
- Empty, labelled, 500ml trigger refills available

2x2Ltr **code:** LEGM-AL0285
12x500ml Refill **code:** LEG-REF#6-12x500



AIR FRESHENER SUPER
Fragranced Air Freshener

- Highly perfumed deodoriser
- Encapsulation technology ensures fresh residual fragrance
- Empty, labelled, 500ml trigger refills available

2x2Ltr **code:** LEGM-AL0290
12x500ml Refill LEG-REF#7-12x500



TOILET CLEANER SUPER
Daily Toilet Cleaner

- Removes limescale
- Strong fresh fragrance
- Empty, labelled, 500ml directional refills available

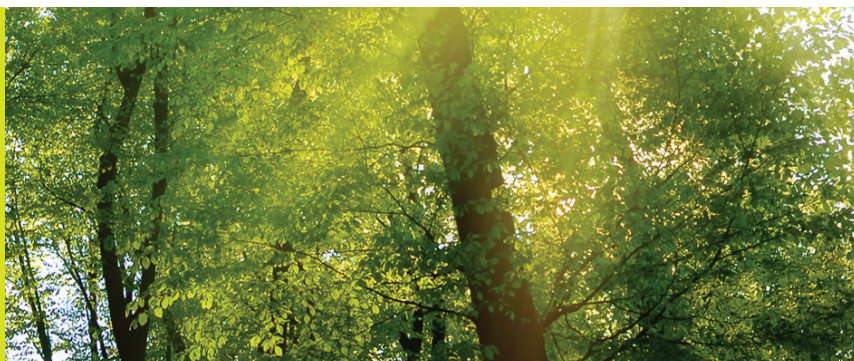
2x2Ltr **code:** LEGM-AL0301
12x500ml Refills **code:** LEG-REF#8-12x500



Holistic
Green



LEGEND Eco Range



Holistic Green Range

The Holchem accredited Holistic Green Range products have:-

- Low impact on aquatic life
- Reduced use of hazardous raw material substances
- Low packaging waste
- Efficient cost in use formulations
- Cleaning performance independently assessed against market leading non-Ecolabel products



Dispenser Pack

2 x 750 ml refillable trigger bottles and 1 x 15 ml pelican pump. This pack is available for All Purpose Cleaner Concentrate, Degreaser Concentrate and Washroom Cleaner Concentrate.

Washing Up Liquid Concentrate



- Eco Label awarded / Licence No: IE/019/004
- One 2x5Ltr pack provides 1300 + solutions in a typical 15 litre sink
- For manual cleaning utensils, crockery

2x5Ltr code: HG001/2X5
6x1Ltr code: HG001/6X1

All Purpose Cleaner Concentrate



- Eco Label awarded / Licence No: IE/020/004
- Designed for cleaning of hard surfaces and equipment
- One 2 x 5l pack provides 666 in use trigger bottle refills

2x5Ltr code: HG002/2X5
Dispenser Pack code: HG002/D

Degreaser



- Eco Label awarded / Licence No: IE/020/004
- For all hard surfaces /floors. Removes fats, oils, grease and difficult soiling.
- One 2 x 5 litre pack will provide 666 in use trigger bottle refills

2x5Ltr code: HG003/2x5
Dispenser Pack code HG003/D

Washroom Cleaner Concentrate



- Eco Label awarded / Licence No: IE/020/004
- Suitable for cleaning all washroom surfaces
- One 2 x 5 litre pack of concentrate will provide 666 in use trigger bottle refills

2x5Ltr code: HG004/2X5
Dispenser Pack code: HG004/D

Toilet Cleaner RTU



- Eco Label awarded / Licence No: IE/020/004
- Ready to use formulation
- Suitable for the daily cleaning of toilets and urinals

6x750ml code: HG005/6X750

Holistic UniBlue Disinfectant



- Ready to use Disinfectant based on organic acids
- No environmental impact
- For use on a variety of surfaces

2x5Ltr code: UDF2/2X5litres



LEGEND Graffiti





BLITZ TS
Graffiti Remover for Biro, Felt Tips and Permanent Markers

- Ready to use formulation
- No environmental impact
- Removes permanent marker and a variety of inks from interior and exterior non-porous and painted surfaces

2x5Ltr **code:** BLITZ-100



BLITZ TS
Graffiti Remover for Biro, Felt Tips and Permanent Markers

- Ready to use formulation
- No environmental impact
- Removes permanent marker and a variety of inks from interior and exterior non-porous and painted surfaces

6x750ml **code:** BLITZ-175



BLITZ F
Graffiti Remover for Leather Dyes and Permanent Markers

- Ready to use formulation
- No environmental impact
- Variety of ink from interior and exterior non-porous and painted surfaces

2x5Ltr **code:** BLITZ-200



BLITZ F
Graffiti Remover for Leather Dyes and Permanent Markers

- Ready to use formulation
- No environmental impact
- Variety of ink from interior and exterior non-porous and painted surfaces

2x5Ltr **code:** BLITZ-275



BLITZ PC
Graffiti Remover for use on Polycarbonate Surfaces

- Ready to use formulation
- No environmental impact
- Polycarbonate-safe removal of biro and permanent marker graffiti.

2x5Ltr **code:** BLITZ-300



BLITZ PC
Graffiti Remover for use on Polycarbonate surfaces

- Ready to use formulation
- No environmental impact
- Polycarbonate-safe removal of biro and permanent marker graffiti.

6x750ml **code:** BLITZ-375



BLITZ GREEN GEL
Graffiti Remover for Spray Paints

- Ready to use formulation
- No environmental impact
- Removes all types of paint from most types of surfaces, including brick, concrete and masonry

1x5kg **code:** BLITZ-700



BLITZ SUPER GEL
Graffiti Remover for Aerosol Paints, Leather Dyes and Permanent Markers

- Ready to use formulation
- No environmental impact
- Removes aerosol paint, leather dyes, permanent markers and a variety of ink from most types of surfaces, including brick, concrete and masonry

2x5Ltr **code:** BLITZ-500

**BLITZ SUPER GEL**

Graffiti Remover for Aerosol Paints, Leather Dyes and Permanent Markers

- Ready to use formulation
- No environmental impact
- Removes aerosol paint, leather dyes permanent markers and a variety of ink from most types of surfaces, including brick, concrete and masonry

6x750ml **code:** BLITZ-575

**BLITZ GS Gel**

Graffiti Remover for all Types of Paints, including Acrylics and Metallics

- Ready to use formulation
- No environmental impact
- Remove all types of paint, including metallic based aerosol paint, leather dyes and permanent markers from most types of porous and non-porous surfaces, including brick, concrete and masonry.

2x5ltr **code:** BLITZ-400

**BLITZ GS Gel**

Graffiti Remover for all Types of Paints, including Acrylics and Metallics

- Ready to use formulation
- No environmental impact
- Remove all types of paint, including metallic based aerosol paint, leather dyes and permanent markers from most types of porous and non-porous surfaces, including brick, concrete and masonry.

6x750ml **code:** BLITZ-475

**BLITZ GHOST GEL**

Graffiti Ghost Image Remover

- No environmental impact
- Removes ghosting left by paint, leather dyes and permanent makers from most types of surfaces, including brick, concrete and masonry. Also suitable for use with care on painted surfaces

2x5Ltr **code:** BLITZ-600

**BLITZ GRAFFITTI WIPES**

Graffiti Removing Wipes for Paint, Biro and Permanent Markers

- Ready to use wipes
- No environmental impact
- Safe to use on most types of plastic including Polycarbonate

Pack of 6 tubs **code:** BLITZ-GRAFWIPE

**BLITZ DRY WIPES**

Dry Wipes

- Specifically designed for applying the Blitz Graffiti range to non-porous surfaces that have been defaced
- The coarse grained material helps to work the product into and loosen the graffiti substance

Pack of 6 tubs **code:** BLITZ-DRYWIPE

**BLITZ FINISHING DETERGENT**

Detergent for Final Cleaning of Graffiti Free Surfaces

- Ready to use formulation
- No environmental impact
- Specially designed for final cleaning of surfaces after removal of graffiti

6x750ml **code:** BLITZ-FINDET

**BLITZ RESPONSE KIT**

Graffiti Response Kit

- Convenient and compact rapid response kit for the most common graffiti problems
- Contains BLITZ TS 750ml, BLITZ GS GEL 750ml, BLITZ FINISHING DETERGENT 750ml and a tub of BLITZ DRY WIPES

Each **code:** BLITZ-JGRK-KIT



LEGEND

Transport





TROJAN
Standard Traffic Film Remover

- Concentrated Formulation
- Formulated to remove grease, oil & grime
- For use on all types of vehicles

25Ltr **code:** LEGM-AT0121



TROJAN
Standard Traffic Film Remover

- Concentrated Formulation
- Formulated to remove grease, oil & grime
- For use on all types of vehicles

210Ltr **code:** LEGM-AT0122



TROJAN SUPER
Premium Traffic Film Remover

- Extra-concentrated formulation
- For all vehicle types
- Powerful enough to clean garage floors and forecourts

25Ltr **code:** LEGM-AT0142



TROJAN SUPER
Premium Traffic Film Remover

- Extra-concentrated formulation
- For all vehicle types
- Powerful enough to clean garage floors and forecourts

200 Ltr **code:** LEGM-AT0143



SNOWSTORM
Foaming Traffic Film Remover

- Concentrated Formulation
- Thick foaming vehicle wash
- For use on all types of vehicles

200Ltr **code:** LEGM-AS0490



PREMIER WASH & WAX
Vehicle Shampoo with Added Wax

- Concentrated Formulation
- Vehicle Shampoo with added wax
- Can be used for washing vehicles manually and through a machine washer

4x5ltr **code:** LEGM-AW0001-4N





PREMIER WASH & WAX
Vehicle Shampoo with Added Wax

- Concentrated Formulation
- Vehicle Shampoo with added wax
- Can be used for washing vehicles manually and through a machine washer

25ltr **code:** LEGM-AW0002



CLEARTHRO
Screen Wash Additive

- Concentrated Formulation
- Removes oil, grease, insects & general grime
- Leaves a non-smear finish to windscreens

4x5ltr **code:** LEGM-AC0020-2N



ALLOY WHEEL CLEANER
Brake Dust Remover

- Concentrated Formulation
- Acid based cleaner
- Cleans & shines all types of steel & alloy wheels

2x5Ltr **code:** LEGM-AT0300-4N



CARRIAGE GLEAM
Transport Vehicle Cleaner

- Concentrated Formulation
- Enables water to bead off leaving a gloss finish
- 4Rail Assessment No: R396351

25Ltr **code:** LEGM-AC0472



CARRIAGE GLEAM
Transport Vehicle Cleaner

- Concentrated Formulation
- Enables water to bead off leaving a gloss finish
- 4Rail Assessment No: R396351

200Ltr **code:** LEGM-AT0473



CARRIAGE CLEAN DS
Transport Vehicle Cleaner

- Concentrated Formulation
- Formulated to deep clean trains & buses
- 4Rail Assessment No: R334778

25Ltr **code:** LEGM-AC0670



MIGHTY F
Multipurpose Train Interior Cleaner

- Concentrated Formulation
- High performance multi-pupose cleaner
- 4Rail Assessment No: R50201

4x5Ltr **code:** LEGM-AM0480-4N



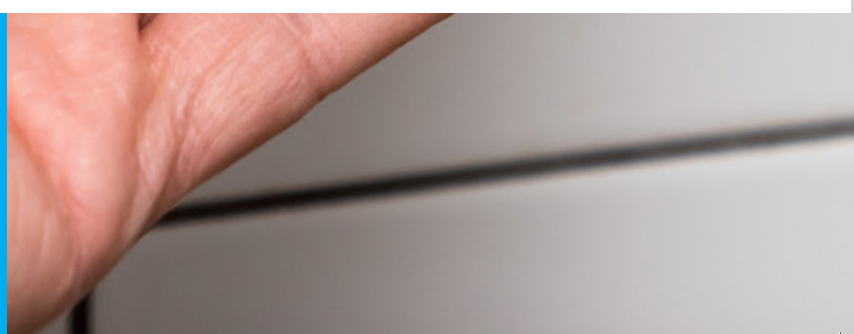
OASIS LEMON
Hard Surface Cleaner

- Concentrated Formulation
- High performance cleaner for floors & panels
- 4Rail Assessment No: R499176

4x5Ltr **code:** LEGM-AO0060-4N



LEGEND Hand Care Dispensers





HAND SOAP DISPENSER

- Refillable liquid dispenser for hand soap
- Dispenser holds 900ml and delivers 2ml per push
- Cost effective in-use

code: OPTE134



MAJESTIC

Pink Pearlised Hand Soap

- Ready to Use formulation
- Soft & gentle lotion handsoap
- Dermatologically tested

4x5Ltr **code:** LEGM-AM0160-4N



HAND SOAP DISPENSER

- Refillable liquid dispenser for hand soap
- Dispenser holds 900ml and delivers 2ml per push
- Cost effective in-use

code: OPTE134



PURELITE PLUS

Antibacterial Liquid Hand Soap

- Ready to Use formulation
- Passes EN1499
- Non perfumed anti bac hand soap

4x5Ltr **code:** LEGM-AP0040-4N



HANDSAN DISPENSER

- Refillable liquid dispenser for Handsan
- Dispenser holds 900ml and delivers 0.8ml per push
- Cost effective in-use

code: OPTE132



HANDSAN

- Alcohol free hand sanitiser
- Contains emollients to prevent skin drying out
- Conforms to EN1276, EN1500 and EN14476

Code: HLH9 4 x 5 litres 20 litres



HAND CARE DISPENSER

- Refillable liquid dispenser for M9 Moisturiser
- Dispenser holds 900ml and delivers 1ml per push
- Cost effective in-use

Code: OPTE142



M9 HAND CARE REMOISTURISER

- High quality moisturising lotion
- Used to prevent dry and cracked skin after washing

Code: HLM29 4 x 5



MICRO CLENZ DISPENSER

Refillable Gel Dispenser for Microclenz

- Dispenser holds 900ml and delivers 2ml per push
- Cost effective in use

Code: OPTE136



MICRO CLENZ GEL

Alcohol Based Gel Hand Sanitiser

- Ready to Use formulation
- Conforms to EN1276 EN1500 and EN14476
- Contains emollients to prevent skin dryness

4x5Ltr **code:** LEGM-AM0620-4N

Logistic Detail

Product Pack	Pallet Quantity	Pallet Layer
12x500ml	100	20
6x750ml	100	25
12x750ml	80	16
6x1L Trigger	112	28
6x1L Cap	100	25
2x2L	136	34
2x5L	80	20
4x5L	40	10
10L	50	25
20L / 25L	32	16
5KG Powder	100	25
10KG Powder	56	14







Merlin Chemicals Ltd

Unit 5, Passfield Mill Business Park
Passfield, Liphook
GU30 7RR
www.merlinchemicals.com
Office: 01428 751 122