

Winter Halter Rack Conveyor Dishwasher

MRT & MRF Machines



Operator to wear PVC or disposable apron and gloves when cleaning the machine.



DAILY

1

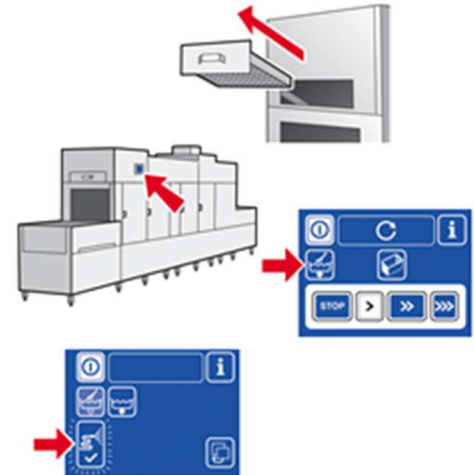
Pull out the grease filter, place it on the washer conveyor and **wash** it at slow speed through the dishwasher, re-insert the filter.

Ensure that the wash arms and filters are in the machine.

Press the "drain/self-cleaning" button twice.

The machine will now drain itself and carry out a refresh cycle. The control panel counts down the self-clean time and runs for 15 minutes.

Once the self-clean cycle is complete, the "clean interior button" flashes to indicate manual cleaning can take place.



2

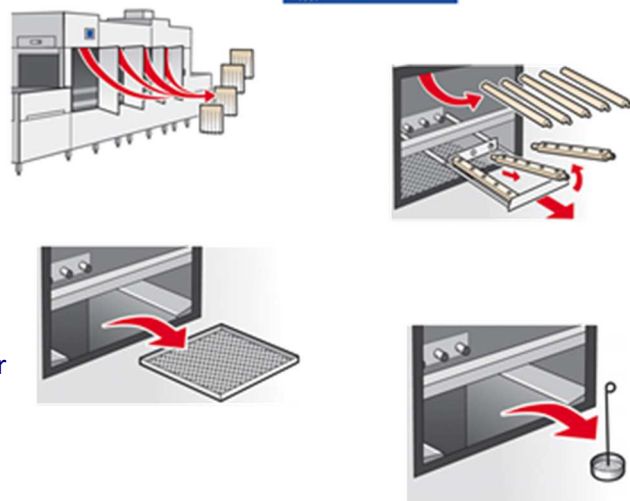
Open side doors to **expose** the cleanable **internal parts**.

Remove the **curtains** taking note of their positions, they are not interchangeable and are coded so they can't be inserted into the wrong position.

Remove all **upper** and **lower** plastic **wash arms**.

Remove all **strainers** from over the tank floor drains.

Remove the **filters** covering the pump inlet.



3

Clean all the **wash** and **rinse arms** and all removed **filters** and **strainers** in **M1** Cleaning Detergent solution, ensure all nozzles and jets are unblocked.

Using a designated cloth and **M1** Cleaning Detergent solution **clean** all **internal** areas of the washer, ensure round filter edge, internal door area and all hard to reach internal areas are cleaned.

4

Using a designated cloth and **M1** Cleaning Detergent solution, **clean** all **external** surfaces of the machine including the external of the condenser unit.

Replace the removed and cleaned filters, strainers and wash arms, ensure that the arms are replaced the correct way round i.e. that the nozzles and jets are facing towards the middle of the washer. (Note on MTR series machine the upper wash arms have 6 jets and the lower wash arms have 5 jets).

Replace the curtains.

Spray all **internal surfaces** with **M2** Sanitiser and allow to air dry.

Leave all **doors open overnight.**

